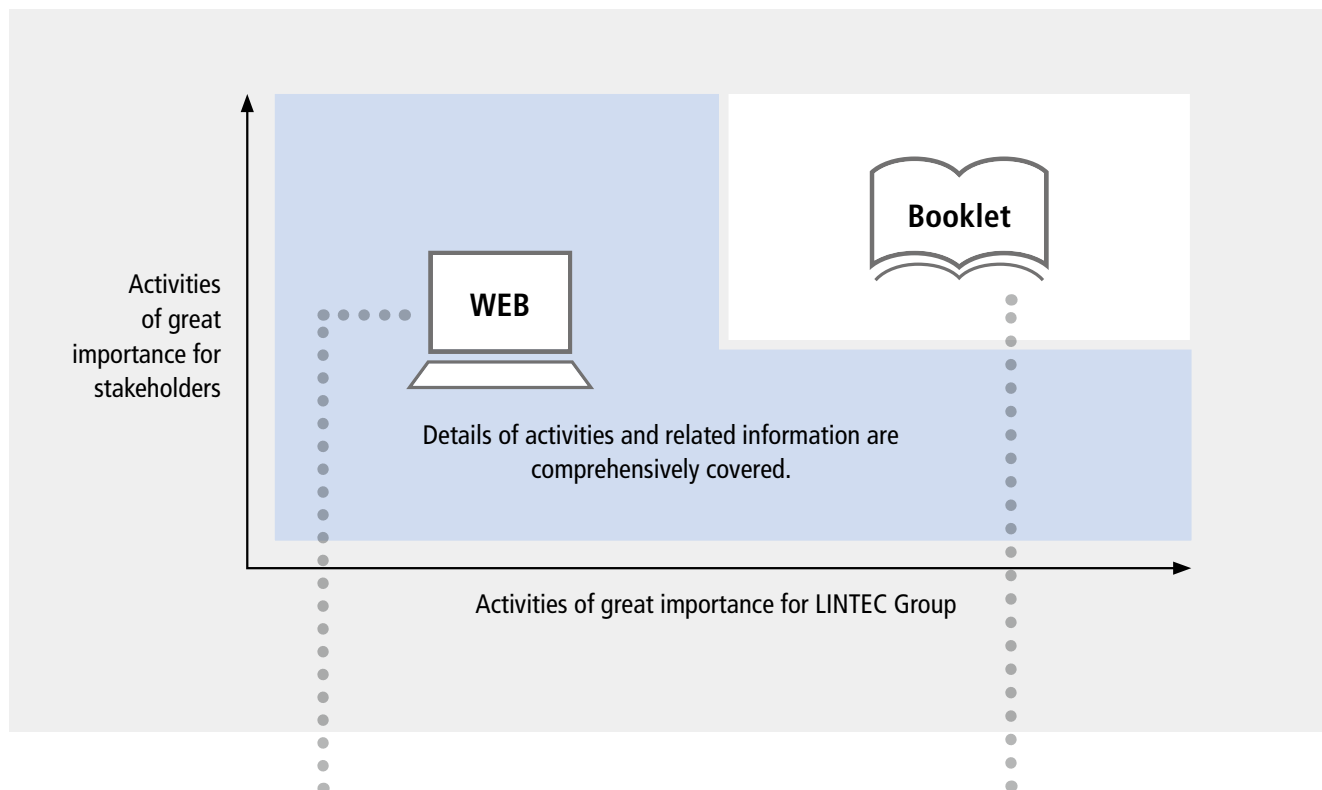
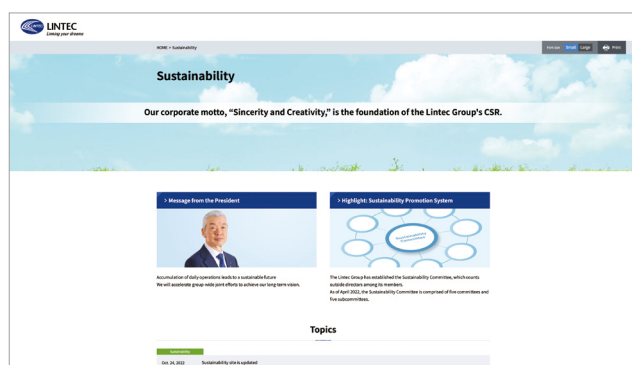


Main Channels for Sustainability Information



Sustainability Website



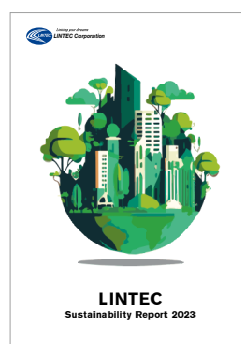
Japanese version scheduled for update in August 2023
(The previous update was in October 2022)

English version scheduled for update in October 2023
(The previous update was in December 2022)

[Japanese] www.lintec.co.jp/sustainability/

[English] www.lintec-global.com/sustainability/

Sustainability Report (Booklet/PDF version)



Fiscal 2022 version

A full version is produced in English and Japanese in PDF format.
An abridged version is created in Korean, Chinese (traditional and simplified), Malay, Indonesian, and Thai.

Key external evaluations

- CDP: Climate change ● CDP: Water security ● CDP: Forests
- For more detailed information on CDP, refer to the CDP website.
- MSCI: Japan ESG Select Leaders Index ● MSCI: Japan Empowering Women Index
- FTSE Blossom Japan Sector Relative Index

External audits

- RBA-VAP audit (Agatsuma Plant)
- For the RBA's Code of Conduct, refer to the RBA's website.