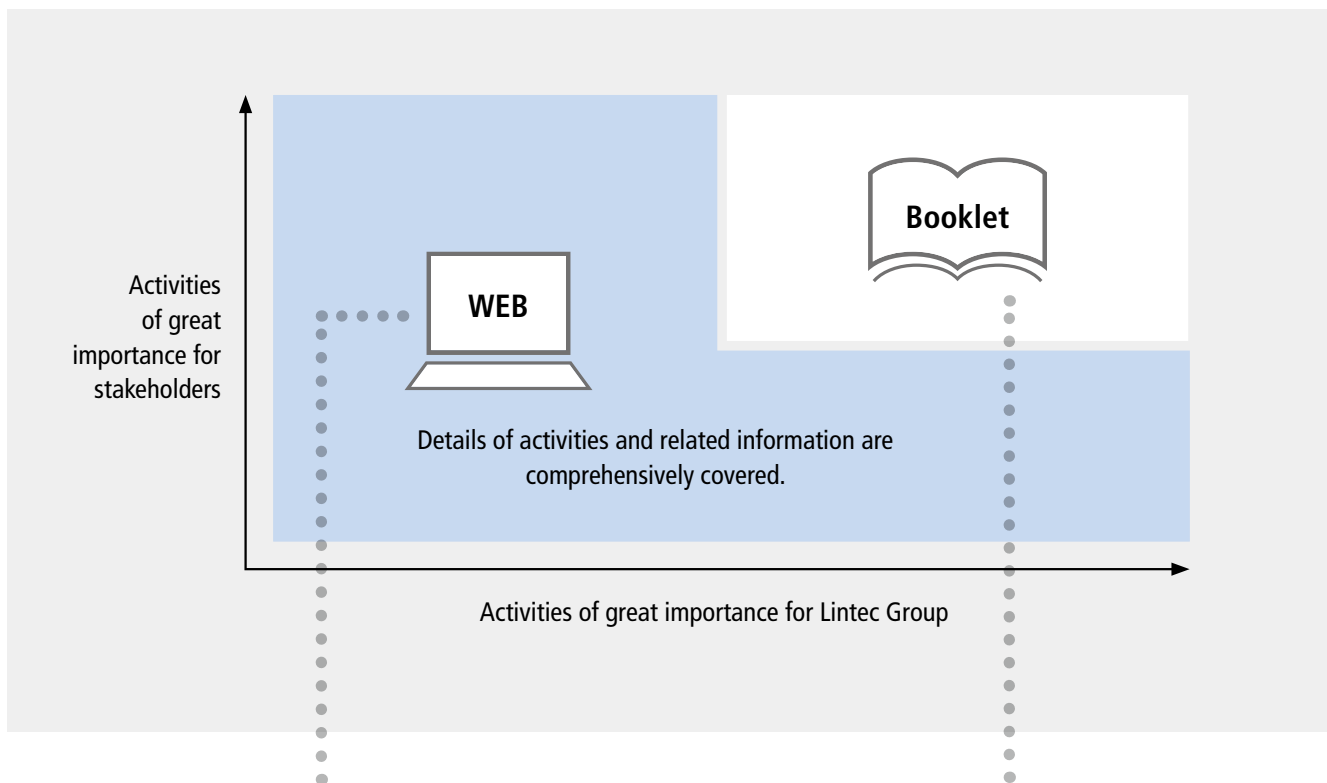
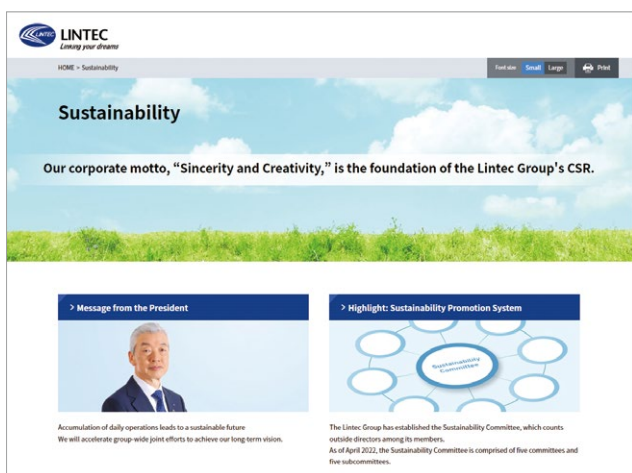


# Main Channels for Sustainability Information



## Sustainability Website



More detailed information on the CSR activities of the Lintec Group is available.

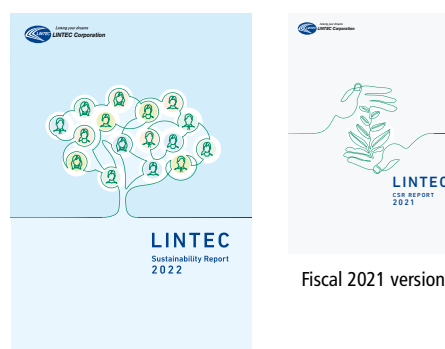
Japanese version scheduled for update in October 2022  
(The previous update was in September 2021)

English version scheduled for update in December 2022  
(The previous update was in December 2021)

[Japanese] [www.lintec.co.jp/sustainability](http://www.lintec.co.jp/sustainability)

[English] [www.lintec-global.com/sustainability](http://www.lintec-global.com/sustainability)

## Sustainability Report (Booklet/PDF version)



The booklet describes information on the CSR activities of the Lintec Group in a simple manner.

In the PDF format, a full version is created in English. An abridged version is created in Korean, Chinese (traditional), Chinese (simplified), Malay, Indonesian, and Thai.

### Key external evaluations

- CDP: Climate change ● CDP: Water security ● CDP: Forests
- MSCI: Japan ESG Select Leaders Index ● MSCI: Japan Empowering Women Index
- RBA-VAP audit (Agatsuma Plant) ● FTSE Blossom Japan Sector Relative Index