





Corporate History

1927	April	Keisuke Shiwaku established FUJI SHOKAI in Sugamo, Tokyo Started production and sales of gummed tape for packaging
1931	August	FUJI SHOKAI was reorganized and FUJI GOMEI KAISHA was established (relocated to Itabashi, Tokyo)
1934	October	FUJI GOMEI KAISHA was reorganized and FUJI SHIKO CORPORATION was established
1960	March	Started production and sales of adhesive papers for labels and later commenced production and sales of adhesive films
1972	March	Started production and sales of labeling machines
1984	October	Company name was changed to FSK CORPORATION
1986	July	Listed on 2nd section of Tokyo Stock Exchange Developed UV curable dicing tape and made full-scale entry into the semiconductor-related product field
1987	September	MADICO, INC., became a subsidiary in the U.S.
1989	March	Approved for listing on 1st section of Tokyo Stock Exchange
1990	April	Merged with SHIKOKU PAPER CO., LTD., and SOHKEN KAKO CO., LTD., and company name was changed to LINTEC Corporation Expanded range of business activities from the fields of adhesive papers and films and related equipment to include specialty papers and release papers and films
1991		Made full-scale entry into the LCD-related product field
1994	May	PT. LINTEC INDONESIA was established
1995	January	MODERN PLASTIC INDUSTRIES CO., LTD., became a subsidiary (merged in April 1996)
	April	LINTEC SINGAPORE PRIVATE LIMITED was established
	April	LINTEC EUROPE B.V. was established
	December	Construction of new building at the Research Center
1999	March	LINTEC INDUSTRIES (SARAWAK) SDN. BHD. was established
2000	April	LINTEC INDUSTRIES (MALAYSIA) SDN. BHD. was established
	July	LINTEC ADVANCED TECHNOLOGIES (TAIWAN), INC. was established
2001	December	LINTEC ADVANCED TECHNOLOGIES (KOREA), INC. was established
2002	June	LINTEC (SUZHOU) TECH CORPORATION was established
	August	LINTEC SPECIALITY FILMS (KOREA), INC., was established
2003	June	LINTEC ADVANCED TECHNOLOGIES (PHILIPPINES), INC. was established
	August	LINTEC SPECIALITY FILMS (TAIWAN), INC., was established
	October	LINTEC ADVANCED TECHNOLOGIES (EUROPE) GMBH was established
2004	February	LINTEC ADVANCED TECHNOLOGIES (SHANGHAI), INC. was established
	August	LINTEC ADVANCED TECHNOLOGIES (MALAYSIA) SDN. BHD. was established
	September	LINTEC KOREA, INC., was established
2009	June	LINTEC VIETNAM CO., LTD. was established
2010	August	Completed reconstruction work at the Tatsuno Plant
2011	June	LINTEC (THAILAND) CO., LTD., was established
2012	November	LINTEC INDIA PRIVATE LIMITED was established
2013	December	Nano-Science & Technology Center was established
2015	January	LINTEC ASIA PACIFIC REGIONAL HEADQUARTERS PRIVATE LIMITED was established
	May	Construction of Advanced Technology Building at the Research Center
2016	October	VDI, LLC, became a subsidiary in the U.S.
	November	LINTEC GRAPHIC FILMS LIMITED,* became a subsidiary in the United Kingdom *Currently LINTEC EUROPE (UK) LIMITED
	December	MACTAC AMERICAS, LLC, became a subsidiary in the U.S.

Product Glossary

<p>Adhesive products for labels</p>	<p>Plain adhesive papers / adhesive films before printing patterns, text, etc., or variable information such as barcodes. The lineup includes a paper base used for a wide range of applications and a film base with superior durability, water resistance, and design.</p>
<p>Automobile-use adhesive products</p>	<p>These include films for replacing paint in door sashes, films for protecting aluminum wheels on new cars, decorative films for motorcycles, etc.</p> 
<p>Casting papers for carbon fiber composite materials</p>	<p>These release papers are used as a base sheet for manufacturing composite materials composed of a sheeted form of fine, hair-like carbon fibers fixed with resin.</p>
<p>Casting papers for synthetic leather</p>	<p>In the manufacturing process for synthetic leather, these release papers are used as patterns for adding designs and gloss to the leather surface.</p>
<p>Films for outdoor signs and advertising</p>	<p>Adhesive films for signs installed outdoors, for body advertisements and decorations for trains and buses, and other applications.</p>
<p>Industrial-use adhesive tapes</p>	<p>These industrial-use adhesive products include double-sided tapes that are used for attachment and bonding of precision components of mobile devices, such as smartphones, as well as low-adhesive tapes that are used for blanking and transportation of LCD components.</p> 
<p>Interior finishing mounting films</p>	<p>These decorative films can achieve creation of diverse interior spaces through attached to interior walls, etc. In addition to materials with various textures and colors, they also take on original design decorations by digital output.</p> 
<p>Labeling machines</p>	<p>Equipment used to automatically affix labels to objects, including models that incorporate printers for the printing of logistics addresses, barcodes, etc.</p> 

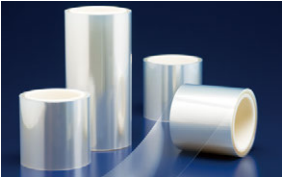

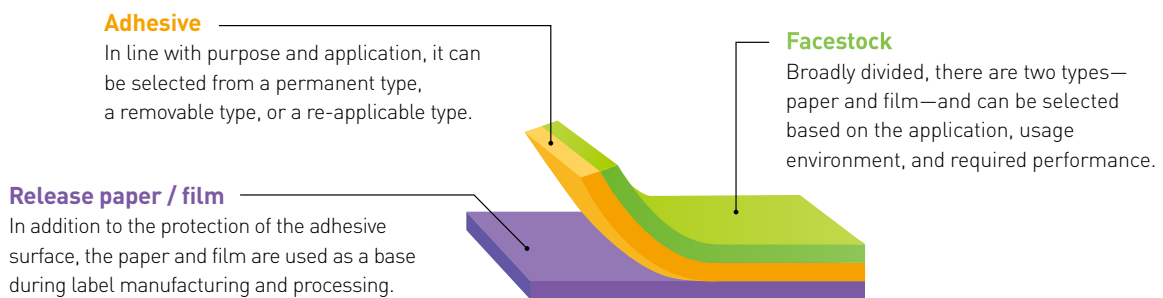
<p>Multilayer ceramic capacitor-related tapes</p>	<p>These release films are used in forming hundreds of ultra-thin ceramic layers to configurate the interior structure of the capacitors.</p>	
<p>Optical display-related adhesive products</p>	<p>These are products that have undergone precision adhesive coating for lamination of optically functional films, which are essential components for LCDs and OLED displays.</p>	
<p>Semiconductor-related adhesive tapes</p>	<p>These specialty adhesive tapes are used in the semiconductor manufacturing back-end processes. They are used to protect the circuit surface when thinning semiconductor wafers through grinding, to secure wafers during dicing, etc.</p>	
<p>Semiconductor-related equipment</p>	<p>These products, which are used in semiconductor manufacturing back-end processes, include equipment for laminating/removing semiconductor-related adhesive tapes and for UV irradiation of tapes to control adhesion of the tapes.</p>	
<p>Specialty papers</p>	<p>Papers used in special applications have a variety of colors, textures, and functions, etc. They include the color papers for envelopes and colored construction papers as well as the papers used in laundry tags which have tear-resistance even when soaked with water, and the papers used in food packaging show oil and water seepage resistance.</p>	
<p>Window films</p>	<p>These adhesive films are applied to window glass in buildings, automobiles, etc. They have various effects such as improving air-conditioning efficiency in rooms and vehicles, shielding ultraviolet rays, and reducing the scattering of splinters when glass is broken.</p>	

Diagram of Adhesive Products for Labels



Other Information

Corporate Information / Investor Information

As of March 31, 2020

Head Office

23-23, Honcho, Itabashi-ku, Tokyo 173-0001, Japan
 Phone: +81-3-5248-7711 Fax: +81-3-5248-7760
 URL: www.lintec-global.com

Established

October 15, 1934

Fiscal Year-End

March 31

Common Stock

¥23,249 million
 Authorized: 300,000,000 shares
 Issued: 76,600,940 shares

Stock Listing

Tokyo Stock Exchange, 1st Section
 Securities Code: 7966

Shareholder Register Agent for Common Stock

Mitsubishi UFJ Trust and Banking Corporation
 1-4-5, Marunouchi, Chiyoda-ku,
 Tokyo 100-8212, Japan

Number of Employees

4,948 (Consolidated)
 2,584 (Non-consolidated)

Major Shareholders

Nippon Paper Industries Co., Ltd.	30.08%
Japan Trustee Services Bank, Ltd. (Trust Account)	6.07%
The Master Trust Bank of Japan, Ltd. (Trust Account)	4.61%
National Mutual Insurance Federation of Agricultural Cooperatives	3.63%
Tamie Shoji	2.48%

Major Subsidiaries * Consolidated Subsidiary

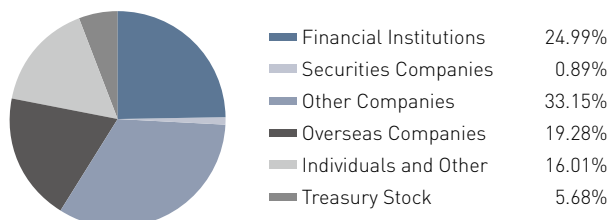
Domestic

LINTEC COMMERCE, INC.*
 LINTEC SIGN SYSTEM, INC.*
 SHONAN LINTEC KAKO, INC.*
 LINTEC SERVICES, INC.
 LINTEC CUSTOMER SERVICE, INC.
 PRINTEC, INC.
 TOKYO LINTEC KAKO, INC.

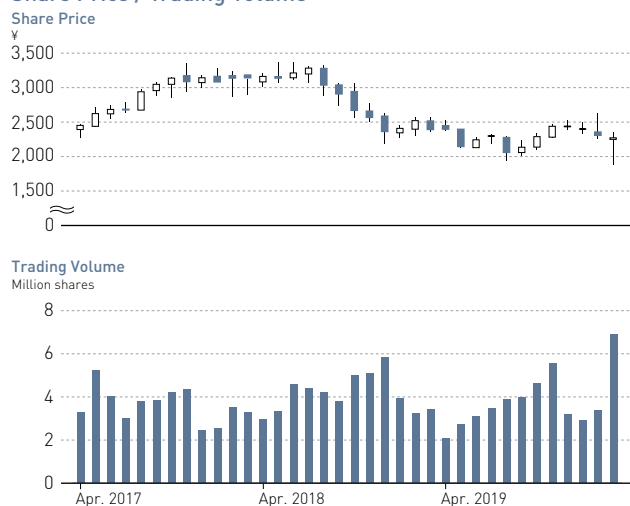
Overseas

LINTEC USA HOLDING, INC.*
 LINTEC OF AMERICA, INC.*
 MACTAC AMERICAS, LLC*
 MADICO, INC.*
 VDI, LLC*
 LINTEC EUROPE B.V.*
 LINTEC EUROPE (UK) LIMITED*
 LINTEC ADVANCED TECHNOLOGIES (EUROPE) GMBH*
 LINTEC (SUZHOU) TECH CORPORATION*
 LINTEC PRINTING & TECHNOLOGY (TIANJIN) CORPORATION*
 LINTEC ADVANCED TECHNOLOGIES (SHANGHAI), INC.*
 LINTEC SPECIALITY FILMS (TAIWAN), INC.*
 LINTEC HI-TECH (TAIWAN), INC.*
 LINTEC ADVANCED TECHNOLOGIES (TAIWAN), INC.*
 LINTEC KOREA, INC.*
 LINTEC SPECIALITY FILMS (KOREA), INC.*
 LINTEC ADVANCED TECHNOLOGIES (KOREA), INC.*
 LINTEC ASIA PACIFIC REGIONAL HEADQUARTERS PRIVATE LIMITED*
 LINTEC SINGAPORE PRIVATE LIMITED*
 PT. LINTEC INDONESIA*
 PT. LINTEC JAKARTA*
 LINTEC (THAILAND) CO., LTD.*
 LINTEC INDUSTRIES (MALAYSIA) SDN. BHD.*
 LINTEC INDUSTRIES (SARAWAK) SDN. BHD.*
 LINTEC KUALA LUMPUR SDN. BHD.*
 LINTEC ADVANCED TECHNOLOGIES (MALAYSIA) SDN. BHD.*
 LINTEC VIETNAM CO., LTD.*
 LINTEC HANOI VIETNAM CO., LTD.*
 LINTEC ADVANCED TECHNOLOGIES (PHILIPPINES), INC.*
 LINTEC PHILIPPINES (PEZA), INC.*
 LINTEC INDIA PRIVATE LIMITED*

Ownership and Distribution of Shares



Share Price / Trading Volume







LINTEC Corporation

LINTEC Corporation
23-23, Honcho, Itabashi-ku,
Tokyo 173-0001, Japan
www.lintec-global.com



The mark of
responsible forestry